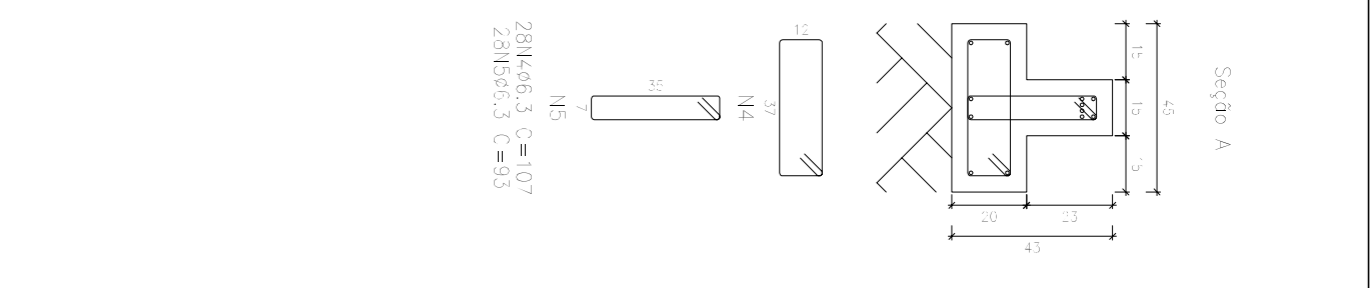
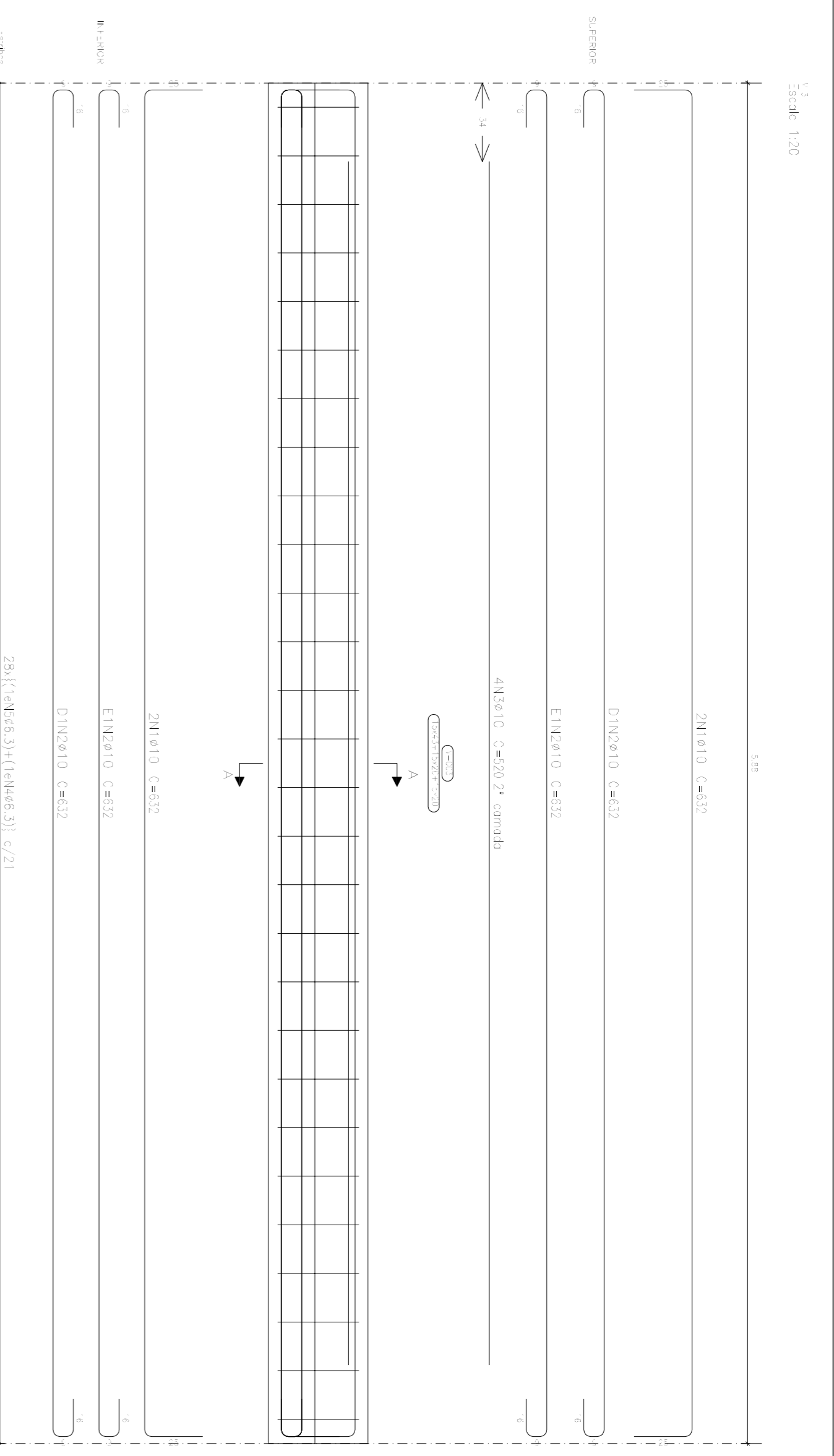
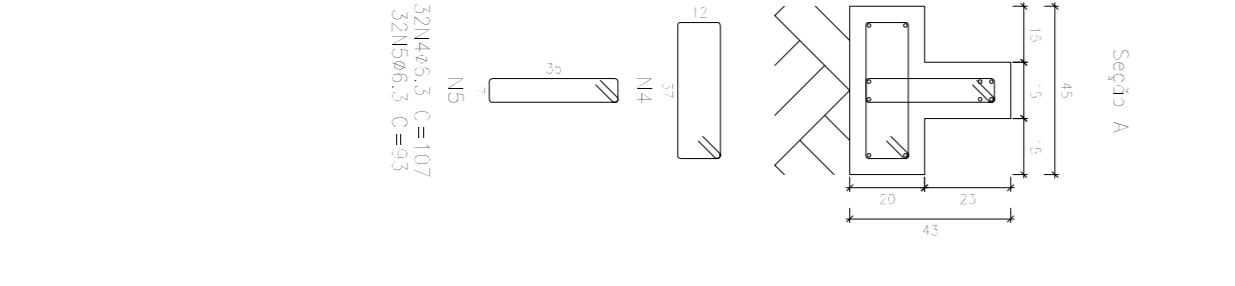
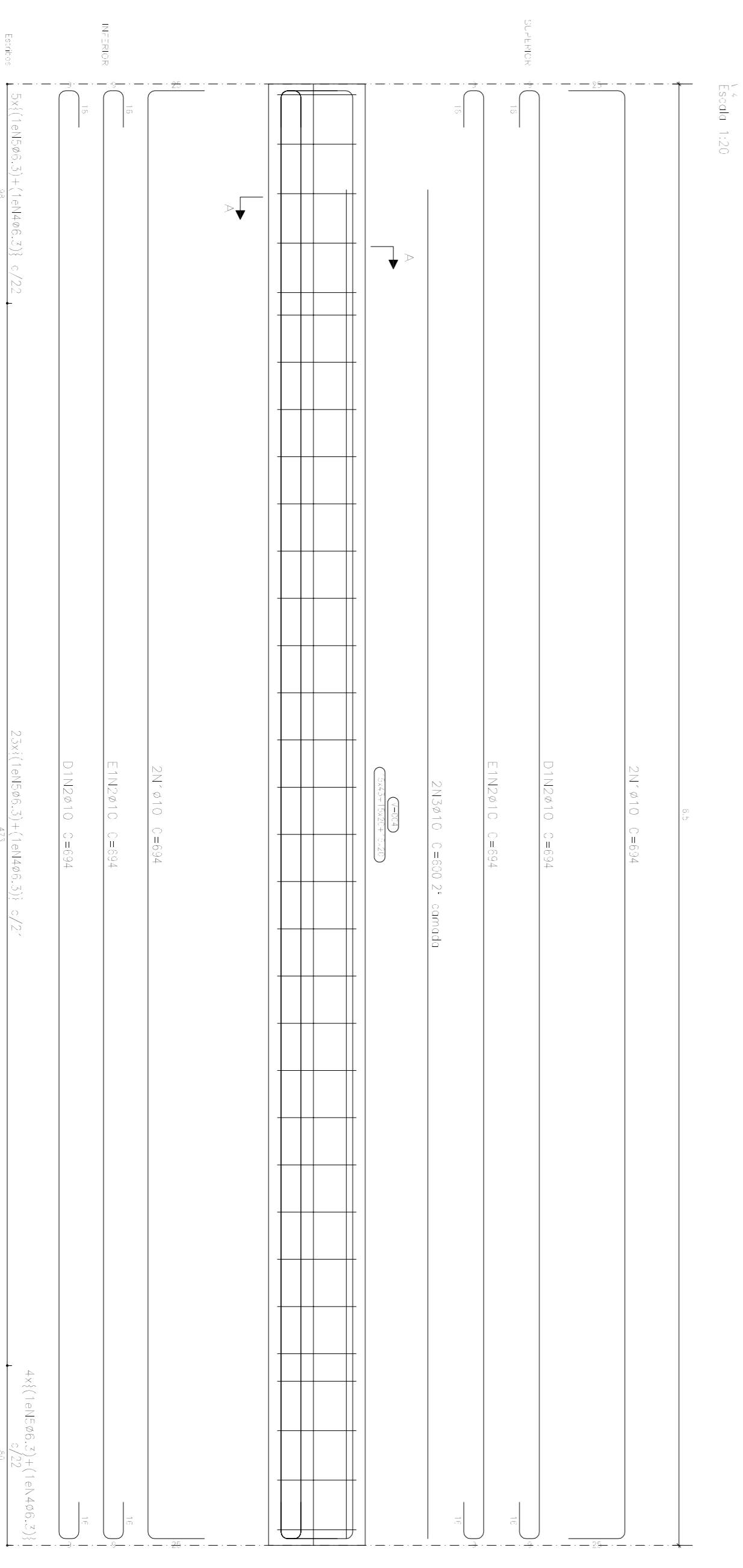
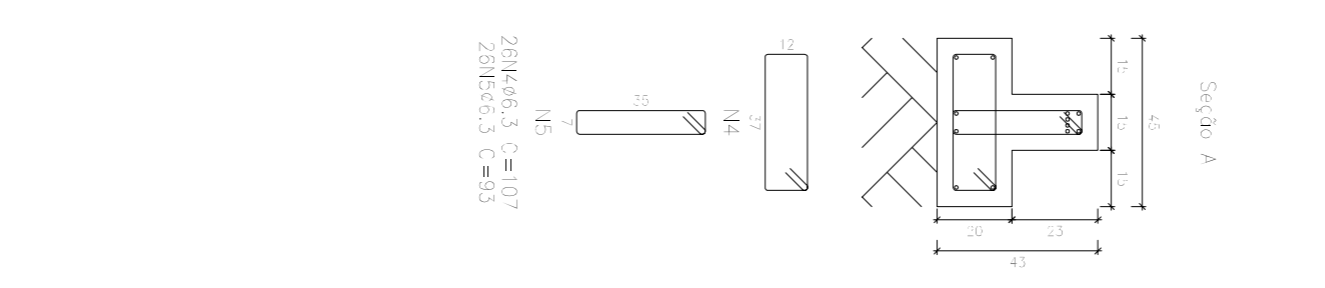
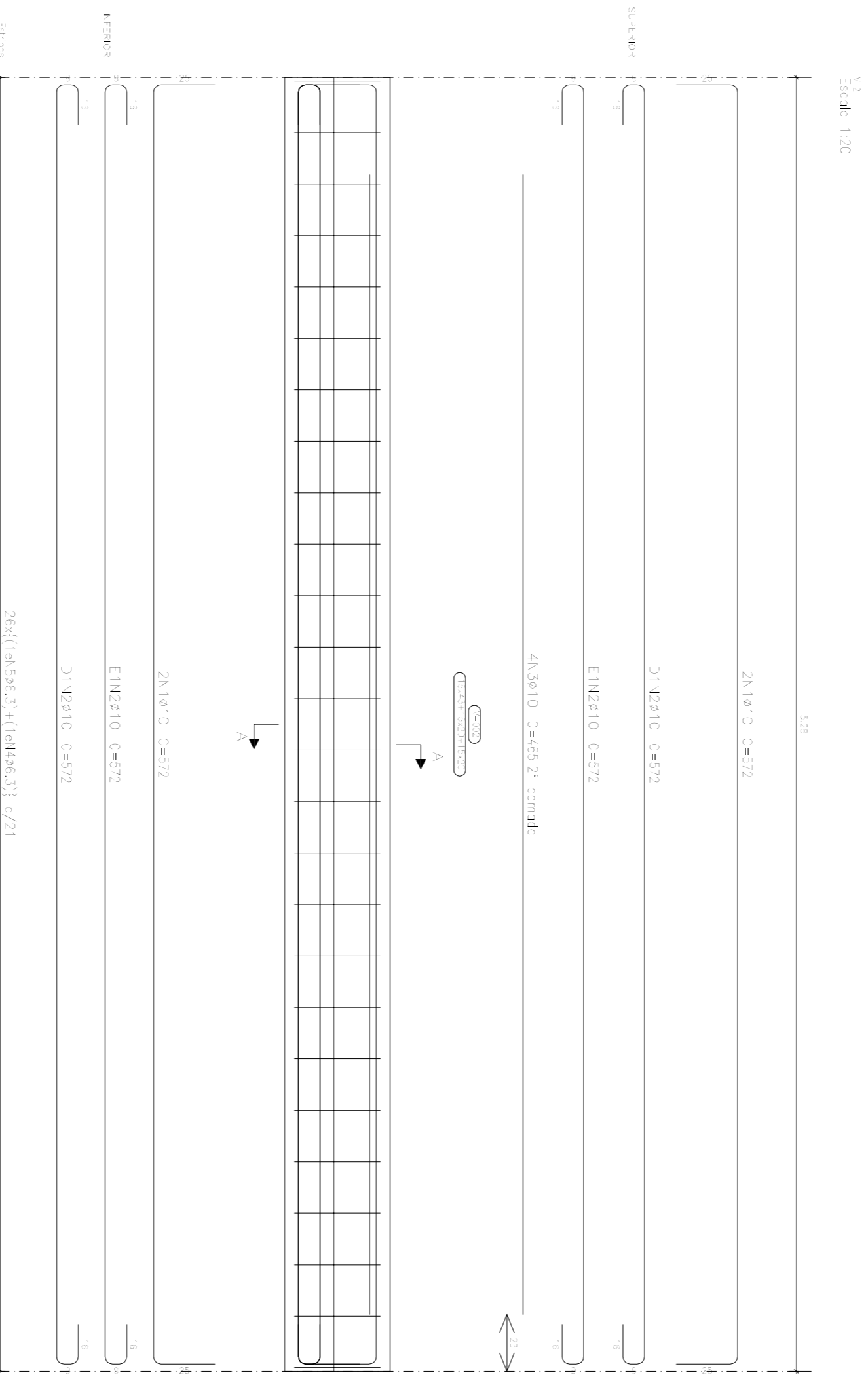
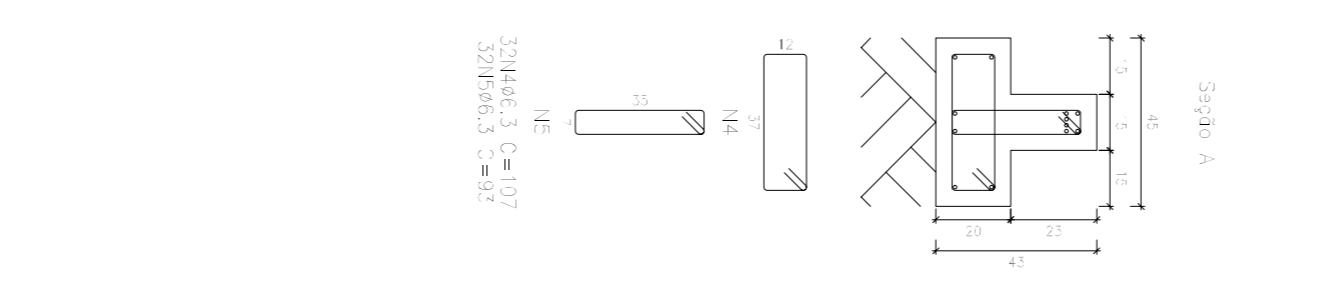
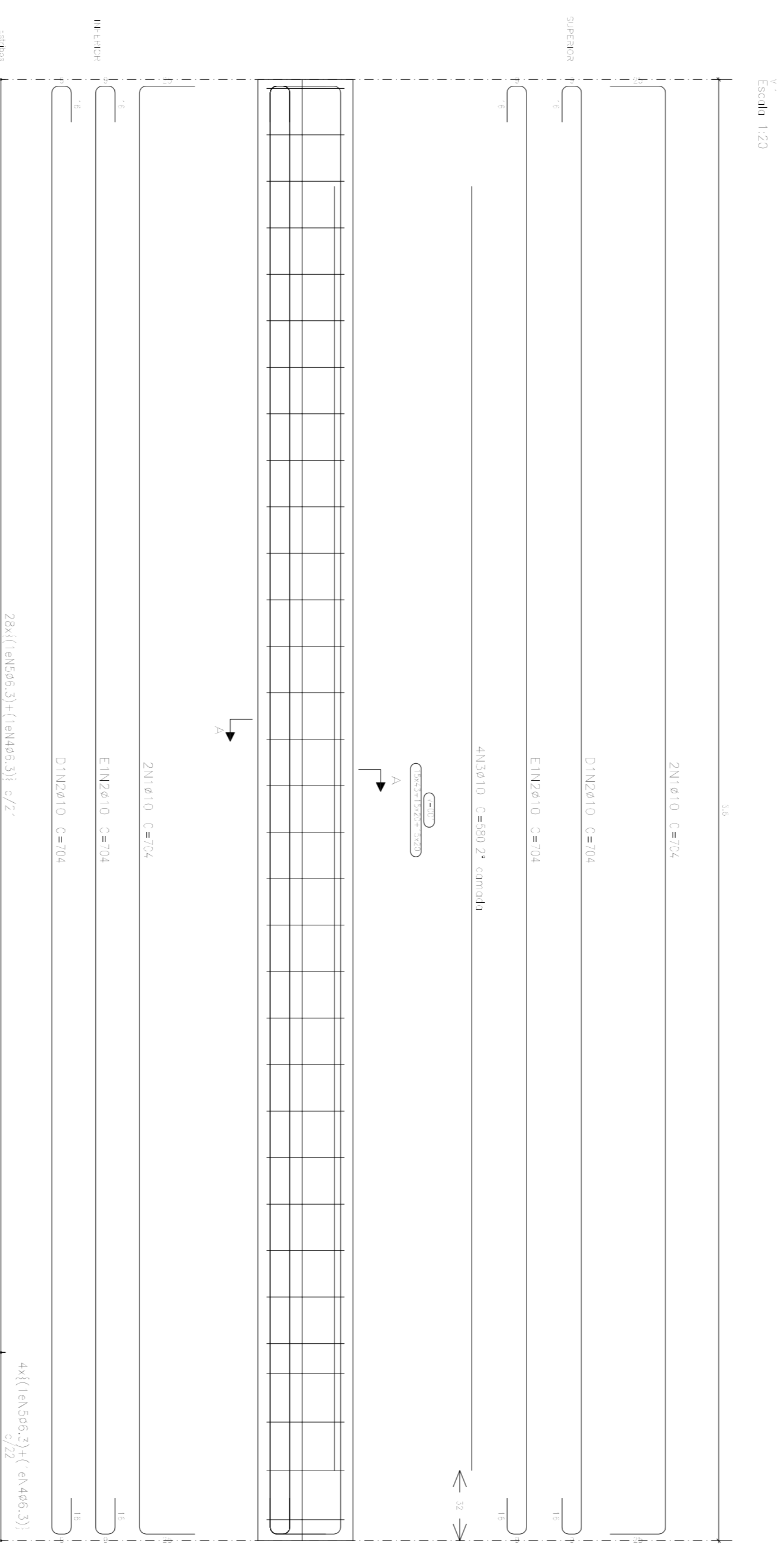


Desenho de vigas
 Concreto: C25, em geral
 Aço das barras: CA-50 e CA-60
 Aço dos estribos: CA-50 e CA-60
 Escala vigas 1:20
 Escala seções 1:20
 Escala aberturas 1:20



Elemento	Res. Dim. Q.	Esquema	Comp. (cm)	Total (kg)
V 1	1 Ø10		704	28,6
	2 Ø10		704	28,6
	3 Ø10		580	23,2
	4 Ø6,3		108	3,9
	5 Ø6,3		94	3,0
V 2	1 Ø10		1004	37,5
	2 Ø10		572	22,8
	3 Ø10		465	18,2
	4 Ø6,3		108	3,9
	5 Ø6,3		94	3,0
V 3	1 Ø10		832	32,5
	2 Ø10		632	25,2
	3 Ø10		520	20,8
	4 Ø6,3		108	3,9
	5 Ø6,3		94	3,0
V 4	1 Ø10		804	31,9
	2 Ø10		804	31,9
	3 Ø10		800	31,7
	4 Ø6,3		108	3,9
	5 Ø6,3		94	3,0
			Total: 1026	63,3
			Ø6,3	64,4
			Ø10	191,9
			Total	259,3



Estado do Rio de Janeiro
PREFEITURA MUNICIPAL DE CORDEIRO
 SECRETARIA MUNICIPAL DE OBRAS E URBANISMO



BRANCHA
PROJETO DE VIGAS DE TRAVAMENTO HORIZONTAL
 PROJETO ESTRUTURAL DE VIGAS DE TRAVAMENTO HORIZONTAL

ENFERGO
07/11
 RUA JOAQUIM SOUZA COELHO - BARRIO DOS VALLOS - CORDEIRO-RJ - CEP 28540-000
 RUA MANOEL COELHO - BARRIO DOS VALLOS - CORDEIRO-RJ - CEP 28540-000
 RESPONSÁVEL TÉCNICO:

ESCALA INDICADA
 DATA OUTUBRO/2018
 DESENHO