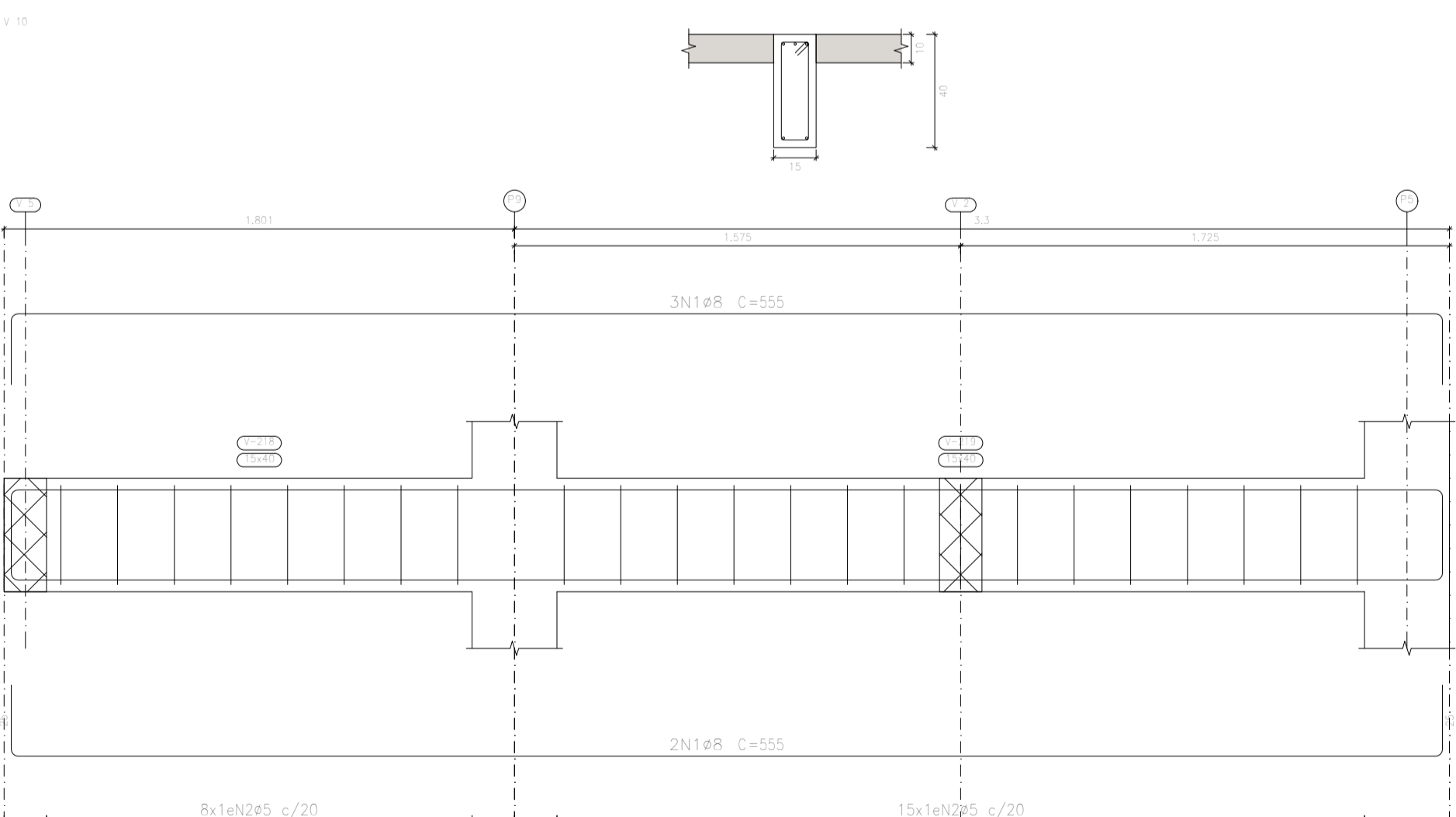
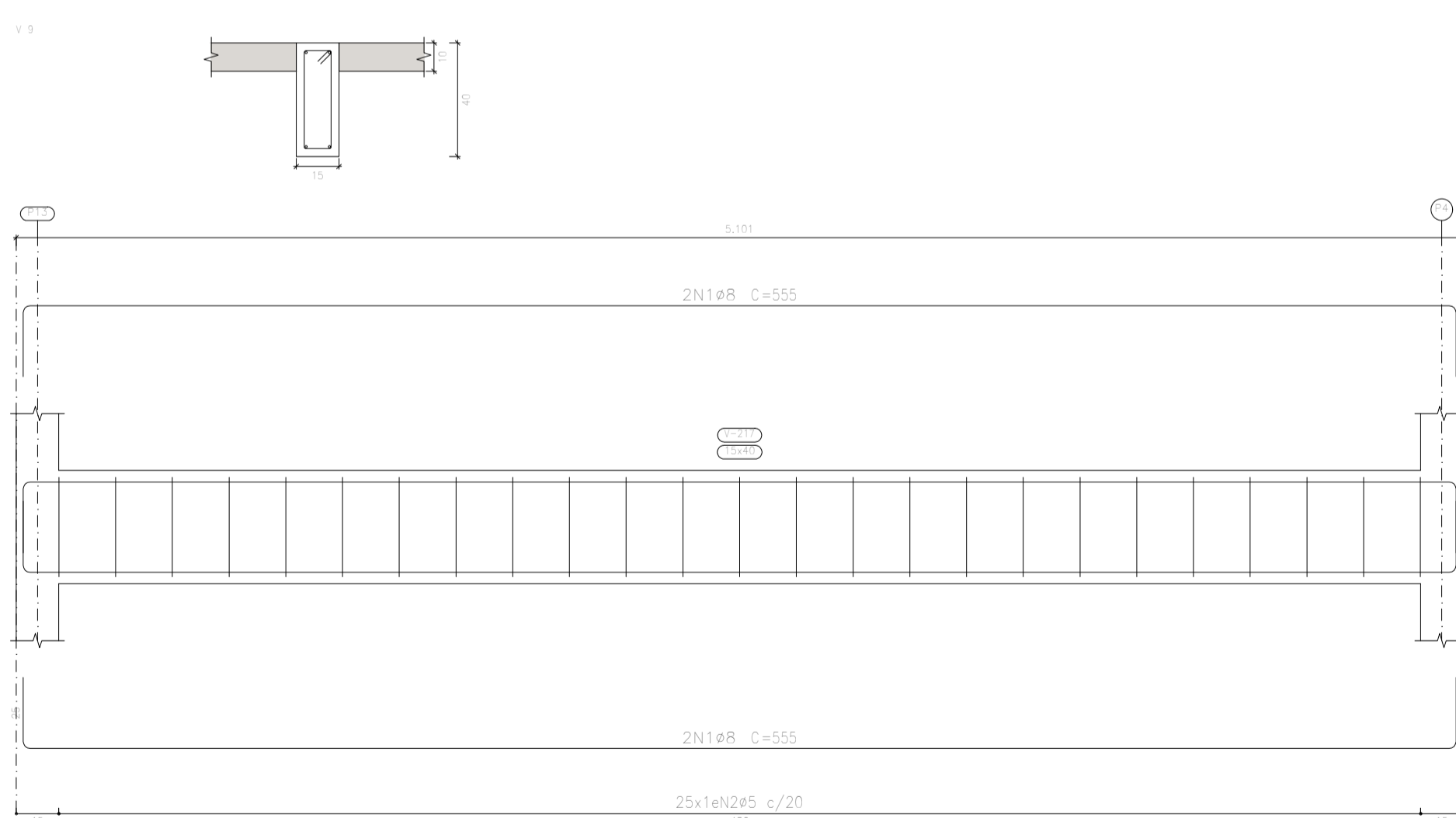
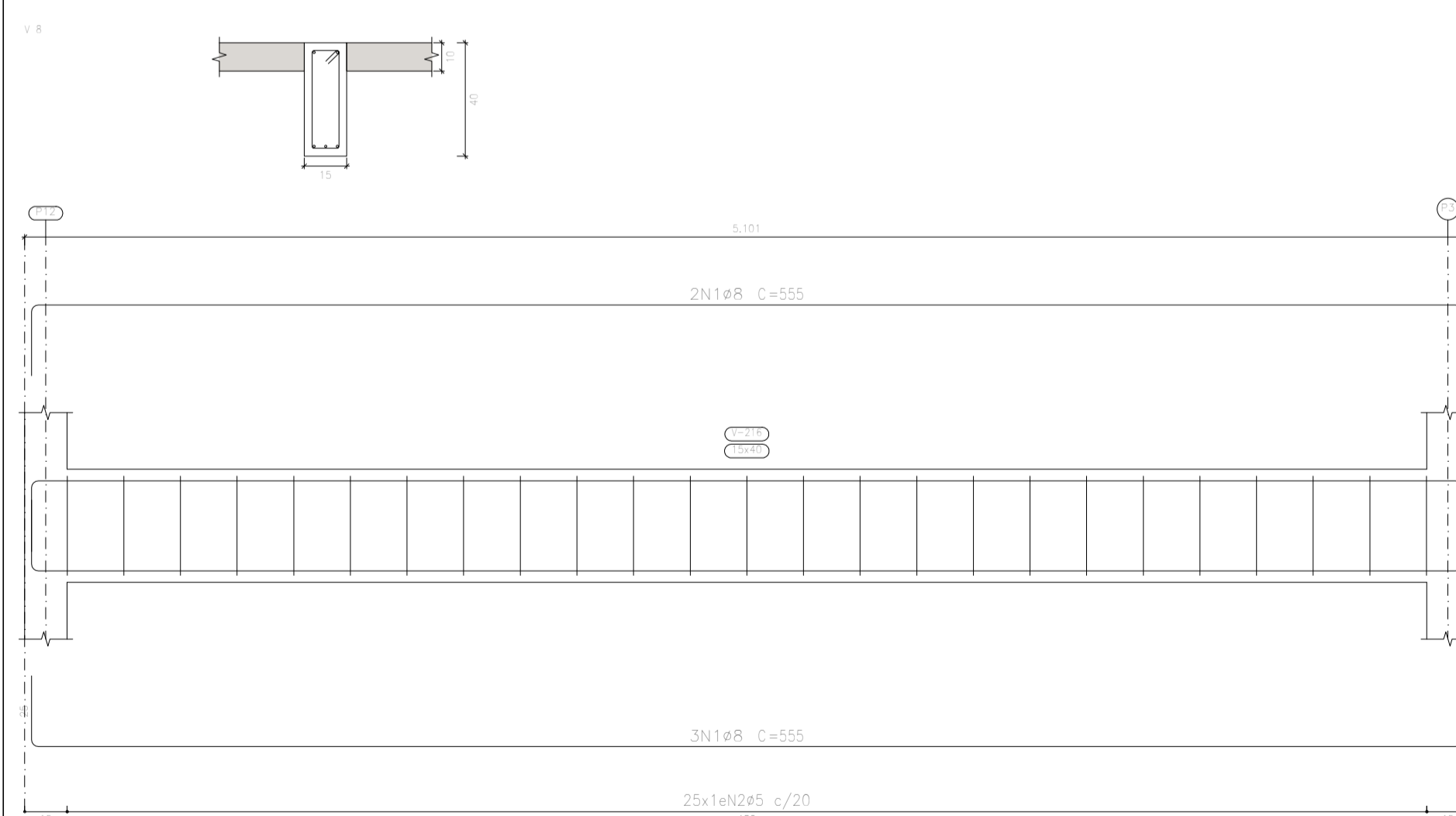
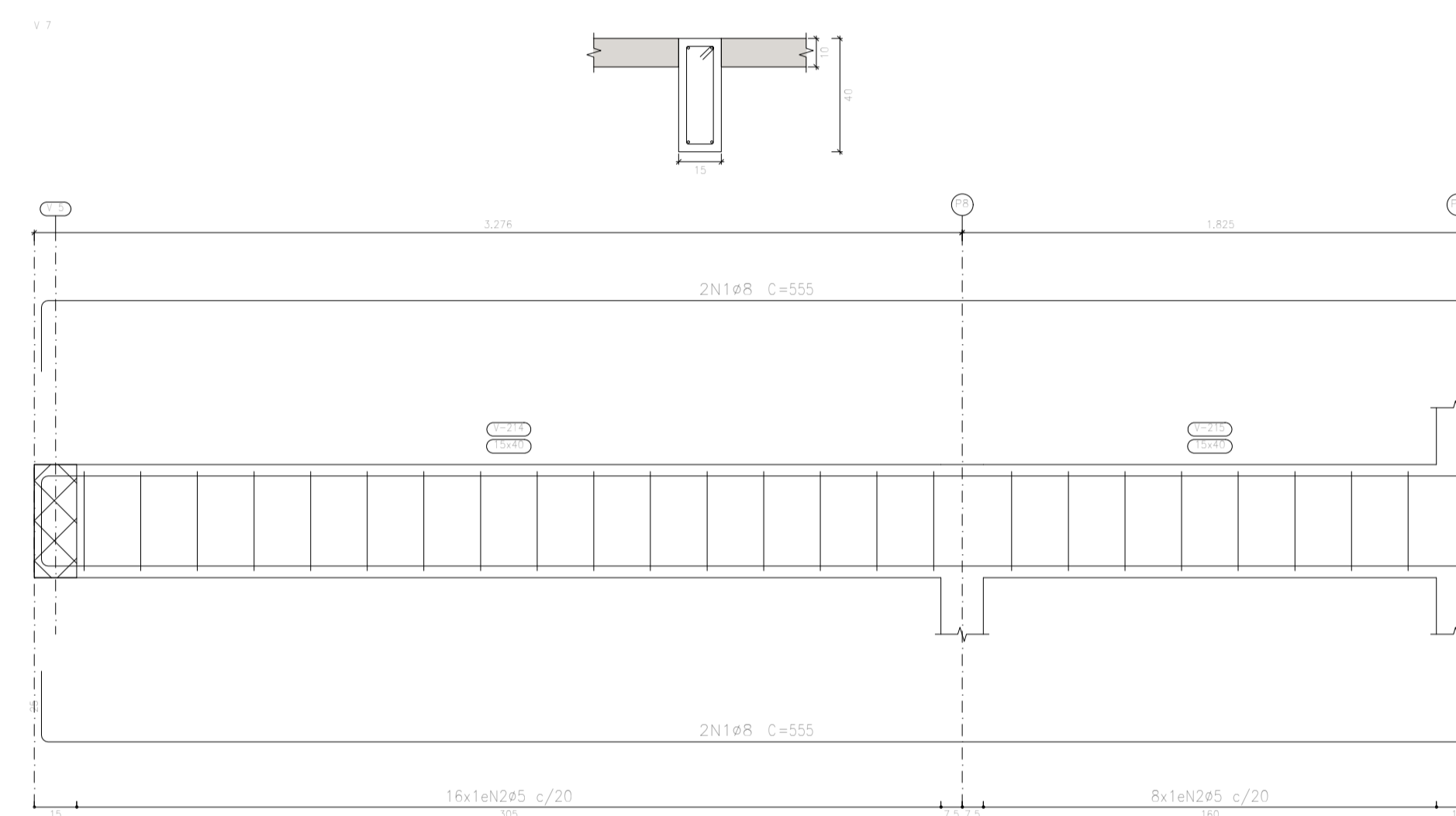
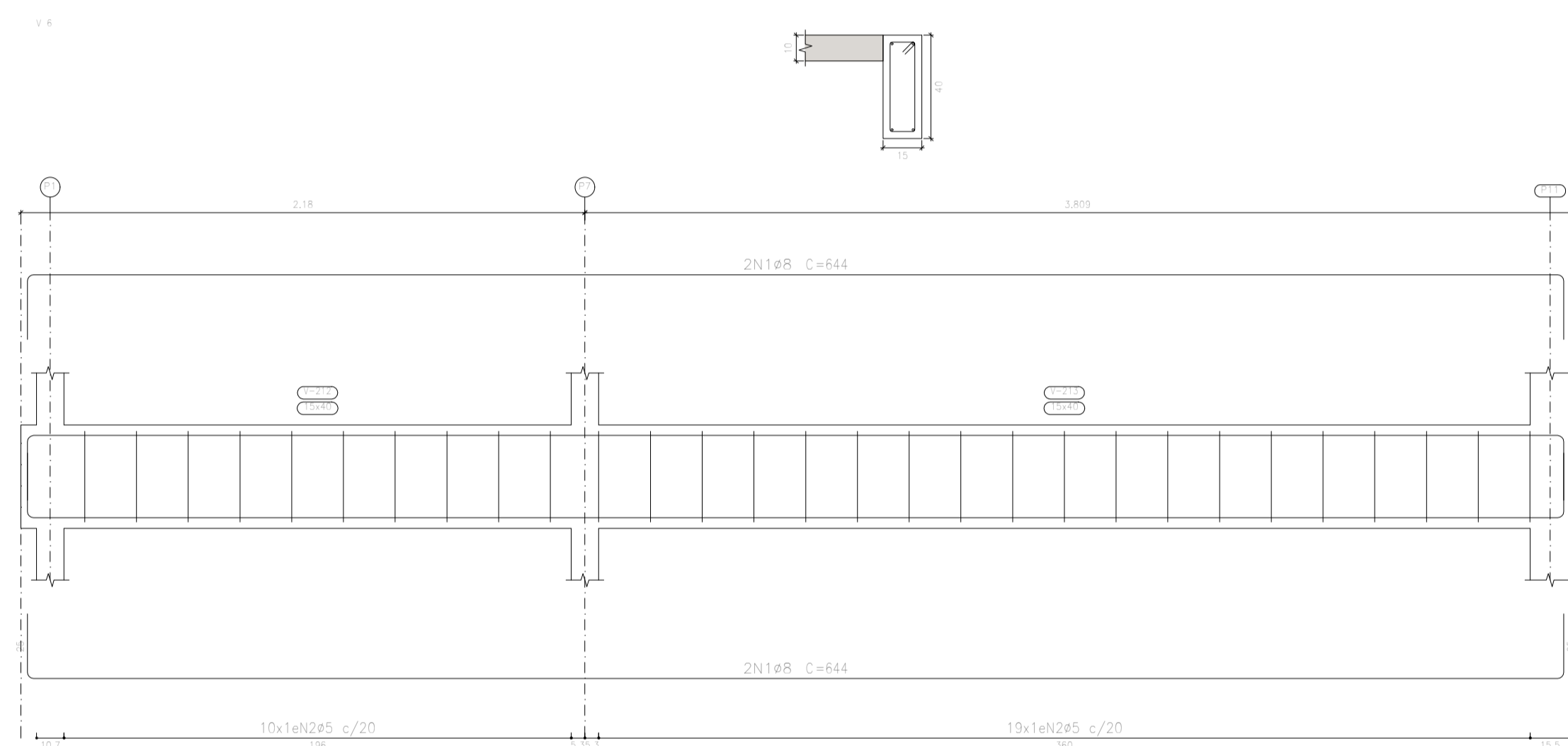
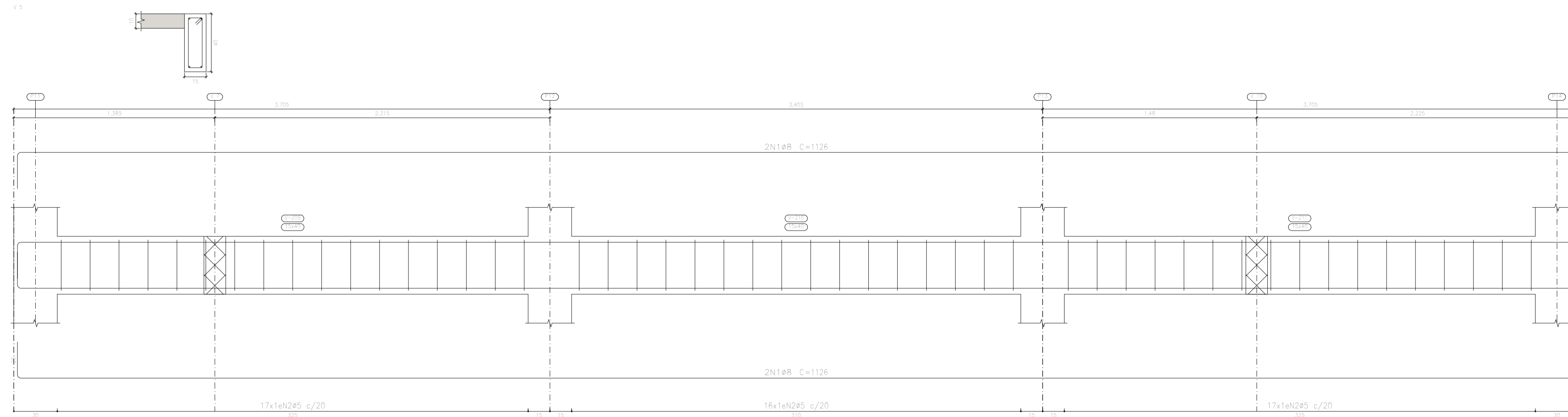




Elemento	Pos.	Diam.	Q.	Dob. (cm)	Reta (cm)	Dob. (cm)	Comp. (cm)	Total (cm)	CA-50 (kg)
V 5	1	ø8	4	25	1076,5	25	1126	4504	17,8
	2	ø5	50	5			98	4900	7,7
Total:									25,5
V 6	1	ø8	4	25	593,9	25	644	2576	10,2
	2	ø5	20	5			98	2842	4,5
Total:									14,7
V 7	1	ø8	4	25	505,1	25	555	2220	8,8
	2	ø5	24	5			98	2352	3,7
Total:									12,5
V 8	1	ø8	5	25	505,1	25	555	2775	11,0
	2	ø5	25	5			98	2450	3,8
Total:									14,8
V 9	1	ø8	4	25	505,1	25	555	2220	8,8
	2	ø5	25	5			98	2450	3,8
Total:									12,6
V 10	1	ø8	5	25	505,1	25	555	2775	11,0
	2	ø5	23	5			98	2254	3,5
Total:									14,5
								ø5:	27,0
								ø8:	87,6
								Total:	94,6

Piso 2  
Desenho de vigas  
Concreto: C20, em geral  
Aço das barras: CA-50  
Aço dos estribos: CA-50  
Escala vigas 1:20  
Escala seções 1:20  
Escala aberturas 1:20



Resumo Aço	Comp. total (m)	Peso (kg)	Total
CA-50 ø5	291.1	46	160
ø6,3	4,5	1	
ø8	285.1	113	